



Austria

METASYS
Medizintechnik GmbH
Florianistraße 3
A-6063 Rum bei Innsbruck
☎ ++43 / (0) 512 / 20 54 20-0
☎ ++43 / (0) 512 / 20 54 20-7

Germany

METASYS
Medizintechnik GmbH
Ahornstraße 19
D-85614 Kirchseeon
☎ ++49 / (0) 89 / 61 38 74 -0
☎ ++49 / (0) 89 / 61 35 8 29

France

METASYS France S.a.r.l.
9, bd E. Michelet
F-69008 Lyon
☎ ++33 / (0) 4 / 37 90 22 15
☎ ++33 / (0) 4 / 37 90 22 47
e-mail: info@metasys.fr
http://www.metasys.fr

email: info@metasys.com

http://www.metasys.com

Italy



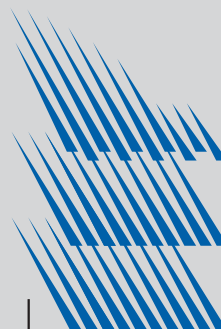
METASYS GROUP
Dental Eco Service Italia S.r.l.
Via Torricelli 47
I-37136 Verona
☎ +39/045/9814477 · Fax 4475
email: desitalia@metasys.com



Ihr METASYS Berater/Your METASYS agent:

GA Eco Center-GB 10/03; 7005.0005; Subject to technical alterations. TK 2003-51

METASYS



GB ▶ Instructions for Use



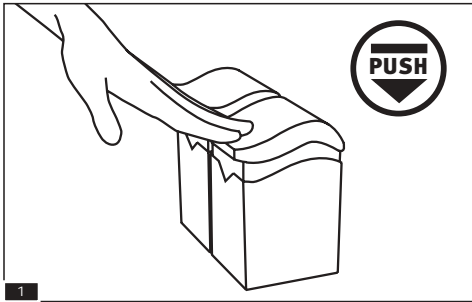
GB ▶ Daily Use

Page ▶ **2**

GB ▶ Changing and Returning the Full Eco-Center Collection Container

Page ▶ **3**

Daily Use of the Eco-Center



1

Our Eco-Center with its Back Box allow you to collect amalgam particles, amalgam capsules and extracted teeth with amalgam fillings in an uncomplicated and hygienic way and to dispose of them correctly. Please attach the enclosed adhesive labels with symbols. It is perfectly safe to store the Eco-Center in your dental practice as the lid is fitted with an activated carbon filter which will absorb any mercury vapour.

1 Push

To open the Eco-Center, press the lid down once quickly. It will then open automatically.

Please note! Never use force and try to pull the lid open as this will damage the lock. In order to guarantee the correct functioning of the closure mechanism, the cover must be pressed down as far as it will go.

2 Symbols

Please take care to store the various waste materials separately as this greatly simplifies the recycling process.

In order to be able to separate the waste materials correctly please use one Eco-Center container for each material. Self-adhesive labels are included to indicate the contents of each container.

Please remove the required labels from this sheet and stick them onto the front of the container as shown.

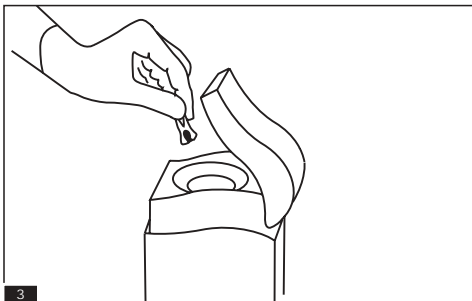


2.1

2.2

2.3

2.4



3

According to the symbol on the front of the container amalgam scraps or extracted teeth can now be put into the containers until they are full.

3 see picture

Please note that to avoid unpleasant smells caused by organic material extracted teeth should be disinfected with hydrogen peroxide (H₂O₂) and dried before being disposed of. When storing the amalgam residues, a little water should be added to the container.

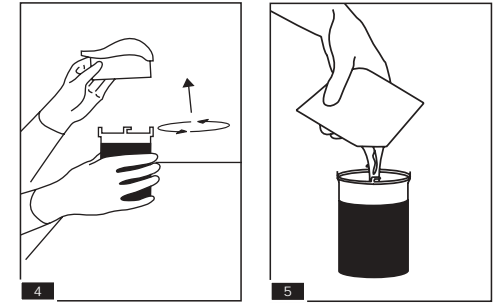
Replacing the Container and Returning the Full Eco-Center Collection Container

4 Separating

When a container is full, lift the upper part with the container out of the housing.

Put the container on a plain surface.

To separate the container from the upper part, turn it anti-clockwise as far as it will go and then remove it.



4

5

5 Final Disinfecting

Open the enclosed sachet of disinfectant as indicated and pour the contents into the full Eco-Center container.

Not valid for Italy!

6 Closing

Take an empty container from the Back Box and take off the lid by turning anti-clockwise.

Close the full container with this lid.

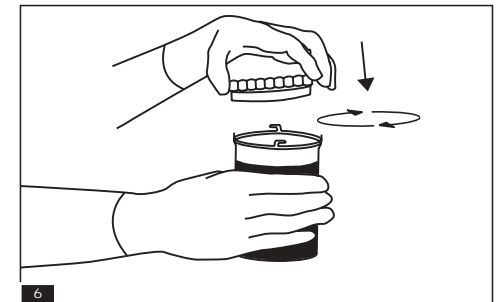
7 Packing

Place the full container in the Back Box.

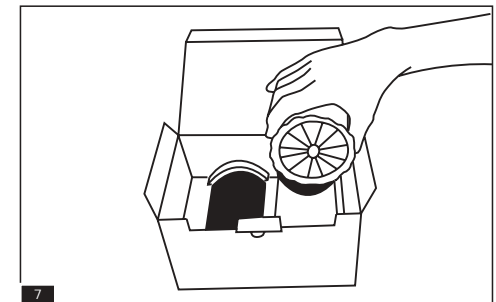
Connect the empty container to the upper part.

Lock it by turning clockwise as far as it will go.

Replace the upper part with the container in the housing.



6

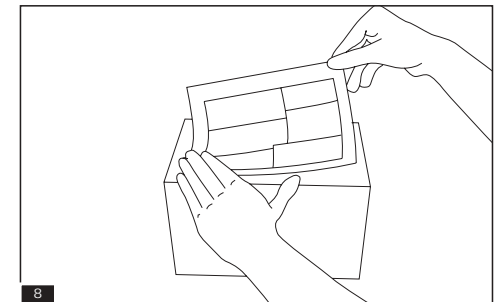


7

8 Dispatch / Eco-Transform

As soon as you have collected 2 full closed containers in the Back Box, prepare them for mailing by using the enclosed return label. Return the package to the address printed on the return label.

Please follow the Eco-Tr ansform instructions!



8